

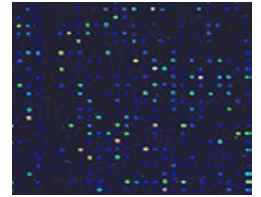
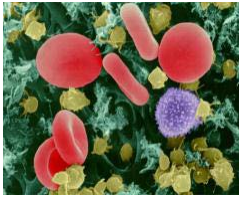
# THE NIH IDeA PROGRAM IN DELAWARE

BUILDS RESEARCH PROGRAMS

CREATES INNOVATION

PROVIDES EDUCATION

GENERATES WORKFORCE



## Centers of Biomedical Research Excellence (COBRE)

7 current awards (8 total): \$170,149,292

## IDeA - Clinical and Translational Research (CTR)

1 current award: \$39,864,987

## IDeA Network of Biomedical Research Excellence (INBRE)

1 current award: \$66,404,285

## DELAWARE AWARDED \$257 MILLION IN IDeA GRANTS

IDeA PROGRAMS	INSTITUTION	FUNDING PERIOD	IDEA FUNDS AWARDED
IDeA Network of Biomedical Research Excellence (INBRE)	UD	2001-19	\$66,404,285
Accelerating Clinical and Translational Research (CTR)	UD	2013-18	\$21,166,552
Molecular Design of Advanced Biomaterials	UD	2002-19	\$26,477,312
Membrane Protein Production and Characterization	UD	2000-15	\$22,026,069
The Center for Pediatric Research	Nemours	2004-20	\$44,416,979
Osteoarthritis: Prevention and Treatment	UD	2002-17	\$25,880,982
Delaware Center for Neuroscience	DSU	2012-22	\$14,716,301
The Delaware Comprehensive Sickle Cell Research Ctr	Nemours	2014-19	\$10,580,389
Discovery of Chemical Probes and Therapeutic Leads	UD	2014-18	\$12,320,131
Cardiovascular Health	UD	2016-21	\$13,731,111
<b>TOTAL IDeA FUNDS Received:</b>			<b>\$257,720,111</b>

\$276 Million  
IDeA Funds  
Awarded

\$485 Million  
Downstream Grants

The COBRE programs, as well as the INBRE and CTR programs, generate, complement, and enrich DELAWARE's research strengths by leveraging NIH investment in personnel, equipment, core facilities and student programs to solve health problems, build research capacity, and build a better student pipeline for the next generation of physicians, healthcare workers, and scientists. Clinical and translational research supported by the CTR program seeks to reduce health disparities in underserved and understudied populations.

## TOP NIH-FUNDED DELAWARE RESEARCH AREAS

- Cancer
- Neuroscience
- Pediatrics
- Arthritis
- Cardiovascular
- Blood disorders
- Genetics
- Rehabilitation

## ECONOMIC IMPACT ON DELAWARE

The IDeA Program has had an additional **\$485 million dollar** economic impact in DELAWARE since 2000\*, <sup>1</sup>

\*Batelle Technology Partnership Practice study estimated \$2.24 economic impact per \$1 of NIH funding.

## IMPACT OF NIH/IDeA IN DELAWARE

### *Research*

- ❖ IDeA funding has led to 992 additional grants
- ❖ The \$257M of IDeA funding has led to \$485M in new awards<sup>1</sup>

### *Education*

- ❖ 98% of undergraduate research interns graduate on-time
- ❖ National recognition of DE's primarily undergraduate institutions

### *Workforce Development*

- ❖ Created 8,260 one-year jobs as a result of IDeA funding
- ❖ Industrial research internships create jobs for students

### *Public Health*

- ❖ Delaware's most recent data shows cancer mortality rate has decreased 15 percent, representing remarkable progress since the 1990s, when the state had nation's the second-highest mortality rate
- ❖ Efforts are ongoing across the state to better understand underlying causes of infant mortality and childhood obesity